

newline

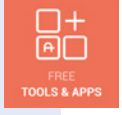
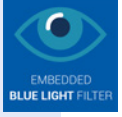
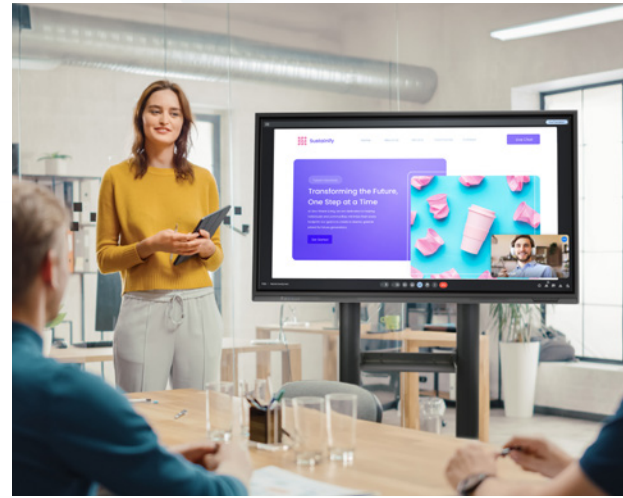
All Stars

NEW 2024

Lyra is a small constellation in the northern sky hosting Vega, one of the brightest stars in the night sky, and the Ring Nebula.

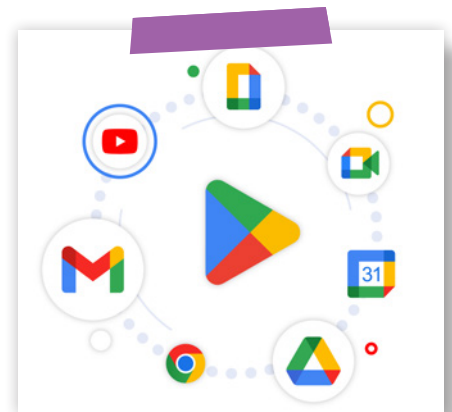


Camera and Mic-Array Optional!



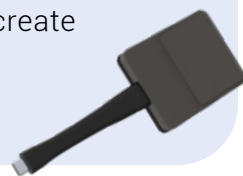
SECURE EDLA INNOVATION

Discover Lyra Pro, our our dependable enterprise solution. **Google EDLA** certified, it seamlessly integrates with Google Apps, featuring high-precision zero bonding for unparalleled writing. The display delivers crystal-clear 4K images with sound. Modular upgrades ensure adaptability, while the secure Android 13 platform prioritizes safety. Lyra Pro enhances efficiency and productivity, offering a reliable solution for today's needs.



MODULAR SYSTEM

Elevate your experience with our universe of solutions. Customise your display with Newlines' accessories. Mix and match to create the perfect fit.



NEWLINE INTERACTIVE ECOSYSTEM

The Newline Interactive Ecosystem enhances operations with integrated tools seamlessly across software and devices, meeting business needs and optimizing workflow.

WHITEBOARD CAST+ ENGAGE

CLASSROOM TOOLS DISPLAY MANAGEMENT



Enhanced Wi-Fi & Bluetooth



65 W Powered USB Type-C



Secure Multi User Profiles



Broad Compatibility



High Quality Sound System



SDM-S Ready

- 55" 65" 75" 86" 98"

MODEL

LYRA Pro 55"	TT-5523QA
LYRA Pro 65"	TT-6523QA
LYRA Pro 75"	TT-7523QA
LYRA Pro 86"	TT-8623QA
LYRA Pro 98"	TT-9823QA

PANEL

Backlight	Direct LED (Wide Color Gamut + Anti Blue Light)
Glass Surface	Anti-Glare + Anti-Fingerprint + Antimicrobial Tempered Glass
Bonding Technology	Certified Zero Bonding
Display Area	55": 1211 x 682 mm 65": 1428 x 803 mm 75": 1650 x 928 mm 86": 1895 x 1066 mm 98": 2161 x 1216 mm
Display Ratio	16:9
Resolution	3840 x 2160 (4K)
Colours	1,07 Billion
Brightness	55": 450 cd/m ² 65": 450 cd/m ² 75": 450 cd/m ² 86": 450 cd/m ² 98": 450 cd/m ²
Contrast Ratio	5000:1
Response Time	5 ms
Viewing Angle	178°
Display Life Time	≥ 50 000 hours
Transparency	> 88%
Haze	2 % ~ 5 %
Touch Surface Hardness	7 H

POWER CONSUMPTION

Standard mode*	55": 95 W
	65": 96 W
	75": 120 W
	86": 128 W
	98": 207 W
Standby mode*	<0,5 W

TOUCH

Touch Technology	Stellar Touch Technology
Touch Points	50 Windows 20 Android/MAC/Linux
Touch Screen Writing Tools	Passive pen, Finger, Fist
Number of stylus	2
Accuracy	±1 mm
Real Palm Rejection	✓

SPEAKER

Speaker Position	Front Facing
Speaker Rated Impedance	6 Ω
Speaker Max.Power Output	20 W x 2

FRONT I/O

USB Type-C (Powered 65 W)	1
HDMI IN 2.0	1
USB Type-B (Touch)	1
USB 3.0 Type-A	2
Microphone In	1

REAR I/O

HDMI IN 2.0 (4k @60 Hz)	2
DisplayPort 1.2	1
USB Type-B 3.0 (Touch)	3
USB Type-C (No Power Delivery)	1
USB Type-A 3.0	2
USB 3.0 Type-A to Android	1
HDMI OUT 2.0 (4k @60 Hz)	1
RS232	1
RJ45 (Gigabit)	In x 1 / Out x 1
OPS Slot	1
SDM-S Slot	1
SPDIF	1
Audio Line Out (Jack 3,5 mm)	1
Power Out Connect (180 W)	1

SMART SYSTEM

SoC Chipset	Amlogic A311D2 octa-core processor 4 x Cortex-A73 at 2,2 GHz, 4 x Cortex-A53 at 2,0 GHz
RAM	8 GB DDR4
Total Storage	128 GB (Expandable)
Operating System	Android 13 Certified
Google EDLA	✓
Formats Support For Image	JPG, JPEG, BMP, PNG MPEG1, MPEG2, MPEG4, SorensonH.263, H.263, H.264, MVC, AVS, AVS+, WMV3, VC1, Motion JPEG, VP8, VP9, RV30/ RV40
Formats Support For Video	MPEG1/2ER1; @LAYER2; @LAYER3, EAC3, ACC-LC, HEAAC, VORBIS, LPCM, IMA-ADPCM, MS-ADPCM, G711 A/MU-LAW, LBR (COOK), FLAC
Formats Support For Audio	
Camera Slot	1
Wi-Fi 6 + Bluetooth 5.2 Module	Integrated (Replaceable)

EXTRA FIRMWARE FEATURES

Multiuser profile	✓
Embedded Google Apps	✓

DIMENSIONS / WEIGHT

Outline Dimensions* (Excl. wall mount)	55": 1294 x 808 x 101 mm
	65": 1513 x 927 x 118 mm
	75": 1735 x 1051 x 119 mm
	86": 1982 x 1191 x 119 mm
	98": 2258 x 1345 x 122 mm
Net Weight*	55": 31,5 Kg
	65": 39 Kg
	75": 52 Kg
	86": 65 Kg
	98": 108 Kg
VESA*	55": 400 x 400 mm
	65": 600 x 400 mm
	75": 800 x 400 mm
	86": 800 x 400 mm
	98": 800 x 600 mm

* The provided measures are indicative and subject to further adjustments. They are not yet considered definitive.